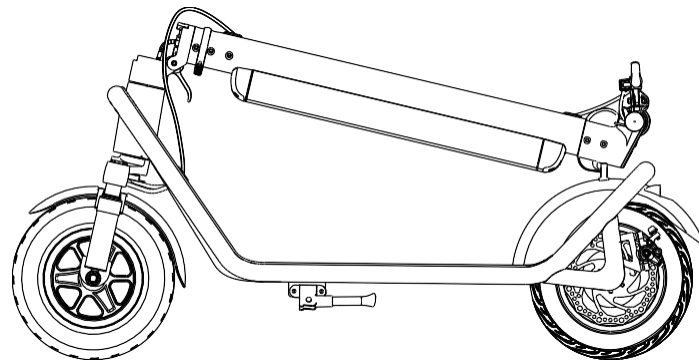


# USER MANUAL

## E-SCOOTER



**To ensure safe use, please read the instruction manual carefully.**  
This instruction manual contains important safety information and tips, please read it carefully.  
Do not use the electric scooter before you read it. Keep the instruction manual properly.

## About the manual

- Thank you for choosing and purchasing our electric scooter series products!
- The manual introduces the safe operation instructions and precautions of the electric scooter. Please read them carefully before using them for the first time. If it is not used according to the manual, it may bring danger. Our company will not bear any responsibility for the personal injury or property loss caused by it!
- For the safety, please read the manual carefully before use to ensure correct and safe driving!
- If you have any questions in the use process, or can not get the information you need from the manual, please contact your dealer in time!

 Please keep the manual properly for reference at anytime!

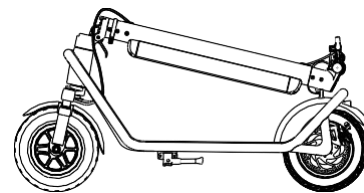
## Content

1. Packing list .....	3
2. Product introduction .....	4-5
3. Product assembly .....	6-8
4. How to ride .....	9-10
5. Safety notes .....	11-14
6. Battery instructions .....	15-16
7. Parameter .....	17
8. Maintenance .....	18
9. Warranty card .....	19

## Packing list

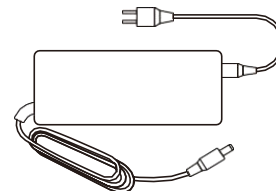
### 1.1. Product

Electric Scooter\*1

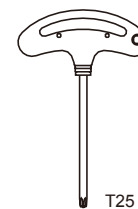


### 1.2. Accessories

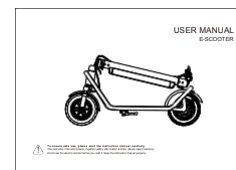
Charger\*1



Wrench\*1



User Manual\*1

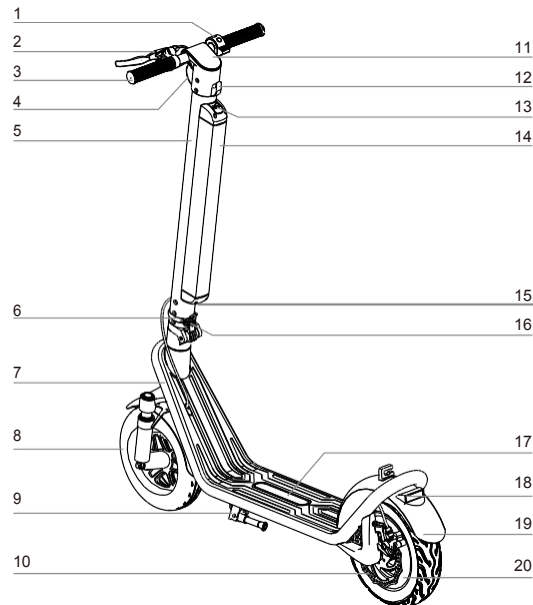


\* If anything missed, please contact the dealer in time!

# Production introduction

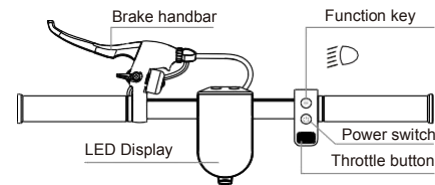
## 2.1 Overall View

1. Accelerator / Throttle
2. Brake handbar
3. Handle
4. Headlight
5. Lever
6. Folding ring
7. Aluminum alloy
8. Tire
9. Kickstand
10. Disc brake
11. LED Display
12. Hook
13. Battery cover lock
14. Battery
15. Charging port
16. Folding spanner
17. Anti-slip pedal
18. Tail light
19. Fender
20. Motor

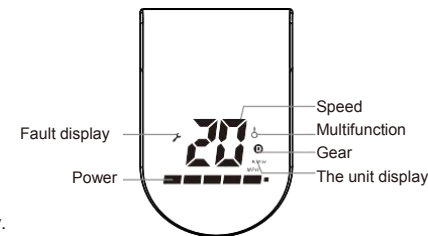


## 2.2 Instructions of Buttons

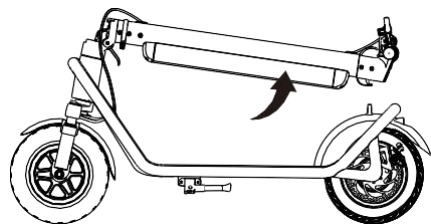
1. Power Switch:  
Long press the power button to turn on/off.
2. Function key:  
A: Short press the function key once: Cycle to switch gears.  
Pedestrian mode: Gear indicator is not displayed.  
Normal mode: Gear indicator shows white.  
Sports mode: Gear indicator shows red.  
B: Short press the function key twice:  
turn on / off the front and rear lights. When the front lights are on, the taillights are always on.
3. Accelerator:  
Press the acceleration button to start and accelerate.
4. Brake: Hold the brake handle to brake.
5. Cruise mode:  
After the constant speed cruise function is turned on, maintain the current vehicle speed for 6 seconds (vehicle speed  $\geq 6\text{km/h}$ ). Enter the cruise mode automatically, and exit the cruise mode when pressing the acceleration dial again or holding the brake firmly.



### LED display

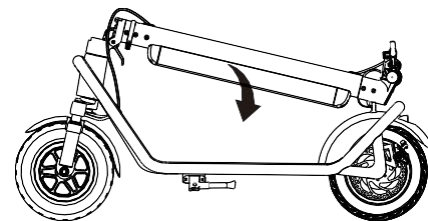
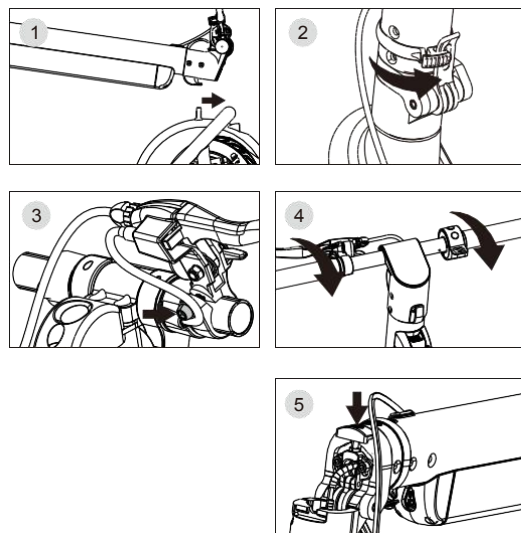


## Product assembly



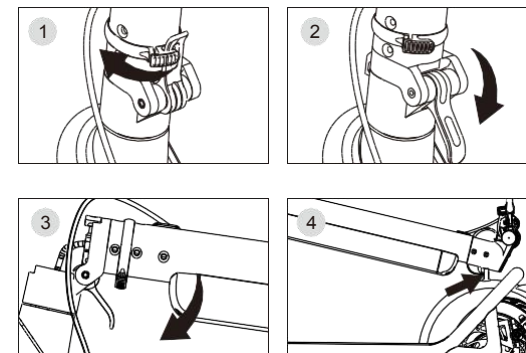
### 3.1. Pre-assembly instructions

1. Slide to the right to remove the folding hook.
2. Fasten the folding spanner and use the folder fixing ring to fix the folder wrench.
3. Fix the brake lever with M5 hex wrench.
4. Tighten handlebars (Pay attention to the direction of rotation when tighten).
5. Adjusting the folding nut clockwise properly according to the shaking situation of lever.

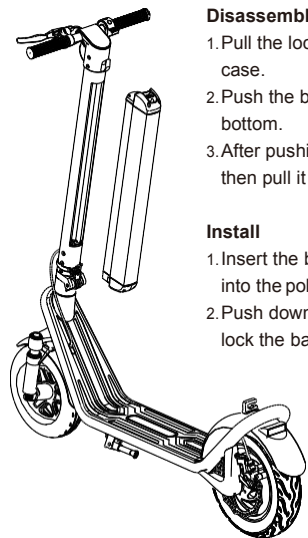


### 3.2. Folding chart

1. Loosen the folder fixing ring.
2. Open the folder wrench.
3. Open the folder wrench and lower the pole.
4. Slide to the right to fasten the folding hook.



### 3.3. How to disassembly / install the battery

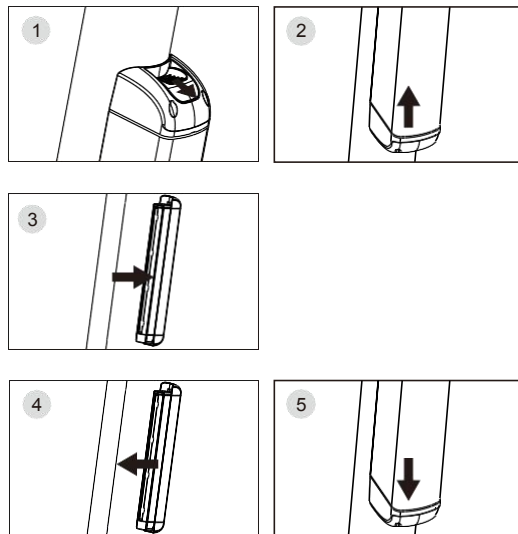


#### Disassembly

1. Pull the lock on the battery case.
2. Push the battery up from the bottom.
3. After pushing the battery up, then pull it out horizontally.

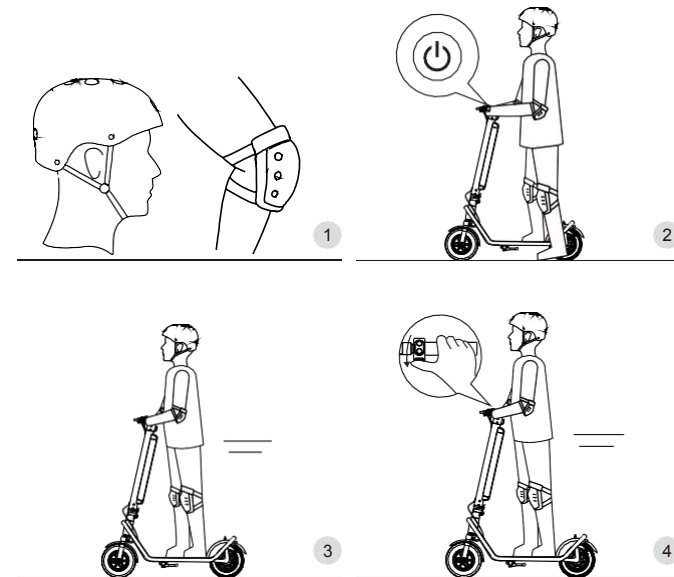
#### Install

1. Insert the battery horizontally into the pole.
2. Push down push down to lock the battery case.



### How to ride

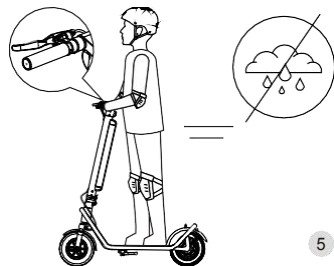
1. Wear helmets and other protective equipment before riding.
2. Long-Press the power button to turn on scooter, stand on the pedal with one foot, press the accelerator, and push you forward with another foot.
3. When the electric scooter is sliding, put the other foot on the pedal and keep both stability.
4. Continuously press the throttle to speed up. Turn the handle to adjust the direction.



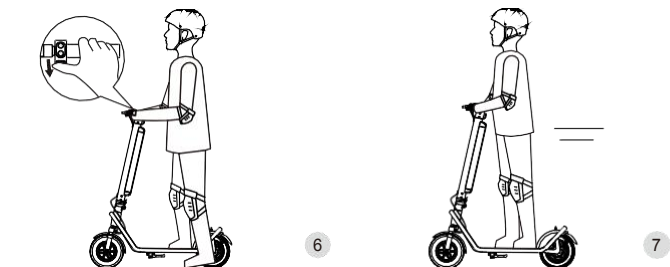


### Note:

1. Riding in rain or snow, the braking distance will be extended, Pls pay attention to slow down.
2. The rear brake can be used for normal driving. The front and rear brakes need to be used together for emergency braking. Don't use the front brake for emergency braking at high speed. Otherwise, it may cause a rollover.
5. Hold the brake grip firmly to slow down till it stopped.
6. When the scooter runs at a slow speed or it stops at a slow speed, you can get off.
7. Please don't ride at a high speed before you are familiar with the performance of the scooter to avoid accidents.



5

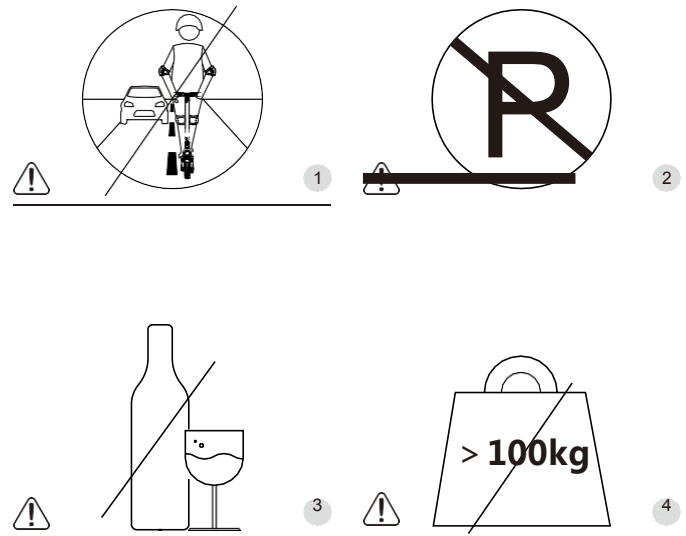


6

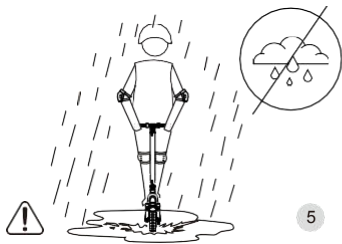
7

## Safety notes

1. Please comply with traffic laws when using electric scooters. Don't ride it on the motor lanes.
2. Don't park electric scooters in the building's lobby, evacuation corridor, or safety exit.
3. Don't ride after drinking or taking medicine.
4. Don't ride with overweight ( maximum load: 100Kg ).

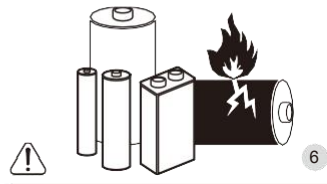


5. Forbidden to ride on the road with heavy water, which is easy to cause danger.



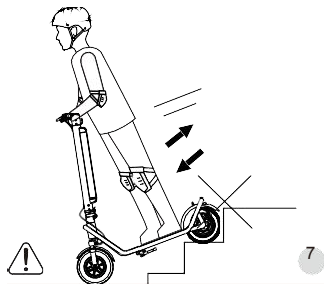
5

6. Forbidden to modify the battery of an electric scooter privately. Modification of the battery is dangerous, and improper operation may cause the battery to explode or fire.



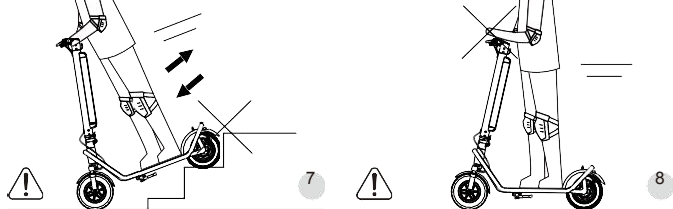
6

7. Forbidden to ride electric scooters up and down steps or jumping obstacles.



7

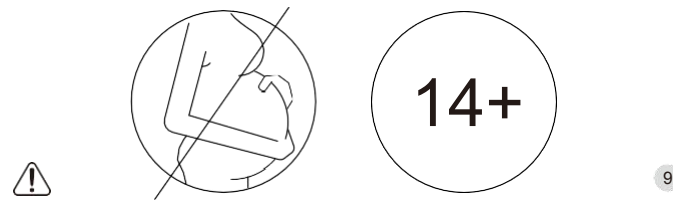
8. Forbidden to leave the handlebar with one hand or both hands at the same time when riding.



8

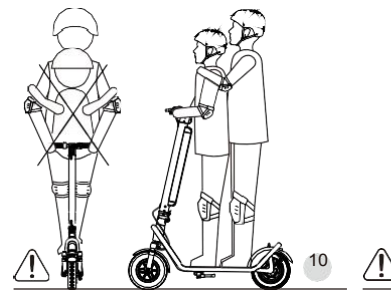
## Safety notes

9. Pregnant women and users younger than 14 years old are not allowed to ride.



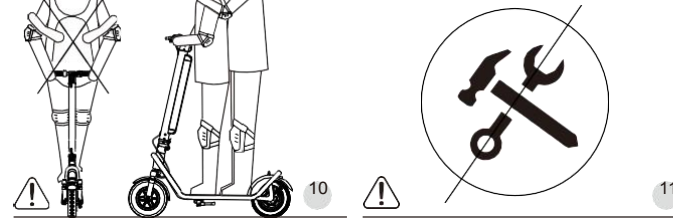
9

10. Forbidden for multiple people or carrying children to ride an scooter at the same time.



10

11. Forbidden to modify electric scooters privately. Private modification may cause an unstable electronic system and cause danger when riding.

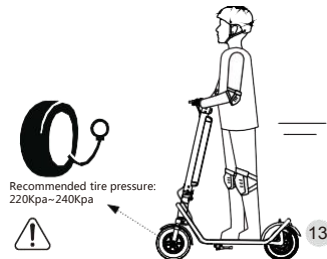


11

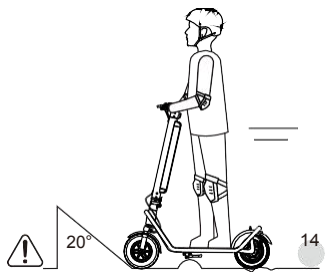
12. Do not call or listen to music when you ride the e-scooter.



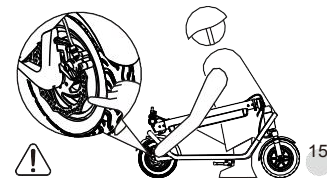
13. Before riding an electric scooter, please carefully check the scooter's condition to make sure that there are no signs of looseness or damage on any part.



14. Be careful of the road with roadblock, sandstone, ponding, mud, wet, ice and snow, slope (angle >20°) stairs, dark area when you are riding.



15. After riding for a long time, the motor hub and disc brake disc would be possible with high temperature. Don't touch them directly to avoid scalding!



## Battery instruction

This is about how consumers charge and maintenance, also hereby listed the detailed spec of battery for your info, please refer to this manual well and follow so as to keep long lifespan, performance for the battery.

### 4.1 Battery Parameters

Name	Parameter
Type	Li-ion battery
Voltage	36V
Battery Capacity	13Ah
Max Charging Voltage	42V
Max Charging Current	2A
Charging Time	6-7 hours
Working Temperature	0°C-35°C
Charging Temperature	0°C-35°C
Store Time(-10°C -40°C)	3 months (full charge)

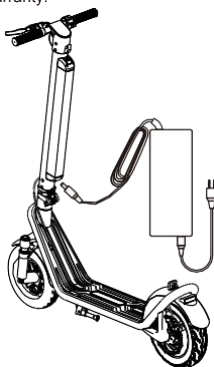
### 4.2 Warns for battery

- The battery must be charged and used within the temperature range required by the battery specification to make the electric scooter work stably and efficiently.
- Please make sure you take off the charger when you install the battery to prevent any danger from happening.
- It is never allowed to dissolve or impale the battery, also make sure NO metal stuff go contact with the battery pin electrode, otherwise it might break the battery.
- It is forbidden to disassemble or pierce the battery pack casing to avoid short circuit caused by metal objects contacting the battery contacts, otherwise it may cause battery damage or personal injury.
- It is potentially causing fire or explosion if water enters battery circuit, thus stop using the battery in case this happens and go to the after-safe immediately.
- You are only allowed to charge the battery with the original adaptor packed, otherwise it will be causing any unexpected consequence.
- If finding the battery broken and smells bad or felt hot, you need to stop using and keep the battery away from other stuffs.
- It helps prolong the lifespan if storing battery after 100% fully charged.
- It is not allowed to store the battery under -20or higher 50°C condition.
- You have to charge it to at least 80% capacity if the battery has not been used for more than 30 days. Better to charge it 100% full every 90 days to protect the battery function.
- It will help prolong the battery lifespan significantly that you charge well accordingly to the manuals after every driving instead of running it out. At room temperature, the battery can play a higher range and performance. But battery life and performance will degrade if used at temperatures below 0°C. Typically, the range may be half or less than at room temperature at -10°C.
- Do not charge and park electric scooters in residential buildings. Keep away from combustibles when charging, and the charging time should not be too long.
- Improper disposal of used batteries may seriously pollute the environment. Please abide by local regulations when disposing of this battery.





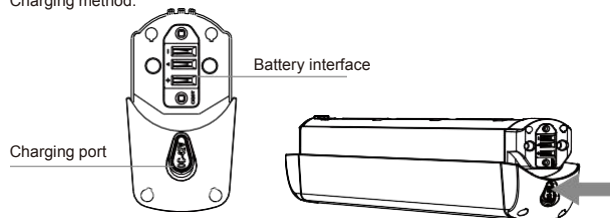
1. When the internal temperature of the battery exceeds 50°C, the battery is in a protected state and cannot be charged.
2. After fully charged, the electric scooter exhausts its stored power after about 90-120 days of standby. If it is not charged in time, it may cause damage to the battery due to excessive discharge. This damage is unrecoverable and it is beyond of our warranty.



#### 4.3 Charging step

- Open the charging port cover, Make sure the charging port is clean and dry.
- Connect the charger with the battery and the other end with power(100V-240V; 50/60Hz), make sure the charging indicator is on.
- When the indicator light on the charger changes, indicating that the charging process is normal, otherwise check if the line connection is good.
- When the indicator on the charger has color change, it indicates that the battery has been filled to 99%, Please stop charging; long time over charge will affect the battery life.

Charging method:



#### ⚠ Tips:

Remove the battery and open the silicone charging port, plug the charger DC into the battery charging port; Plug the power cord into the charger, then connect the other port to the socket (100V-240V; 50/60Hz), and confirm the charger indicator is on normally.

**Cover the charging port with the anti-dust cap in case some metal may touch the charging port and bring short-circuit after charging finished.**

## Parameter

Product name	Electric scooter	
<b>Main specification</b>		
Unfolding size:	mm*mm*mm	1130*460*1260
Folding size:	mm*mm*mm	1130*460*550
Center distance of front and rear wheels	mm	800
Net Weight	kg	19
Max speed	km/h	25
Max load	kg	100
Max climbing angle	°	20
Operating temperature	°C	-10 ~ +40
Storage temperature	°C	-20 ~ +45
Waterproof level	/	IPX4
<b>Battery specification</b>		
Battery type	/	Li-ion battery
Battery capacity	Ah	13
Rated voltage(DC)	V	36
Maximum charging voltage(DC)	V	42
<b>Motor specification</b>		
Motor type	/	Permanent magnet brushless
Rated power	W	450
Rated voltage	V	36
<b>Charger specification</b>		
Input voltage(AC)	V	100~240(50~60Hz)
Output Power	W	84
Output voltage	V	42
Output current	A	2

# Maintenance



## Tips:

- Please charge your electric scooter before storage, for preventing the battery from discharging too long time. Please ensure charge at least once every three months.
- If the storage environment temperature is lower than 0 °C, please don't charge electric scooter. Please put it in inside environment temperature (above 10 °C) and then charge, storage temperature is - 10 °C to 35 °C.
- Please keep the electric scooter in a suitable place indoor, dry and appropriate temperature. You can mask the electric scooter to prevent from the dust.

## 8.1 Maintenance considerations :

- Make sure the electric scooter charger and charging line are disconnected and ensure that the electric scooter is off.
- Wipe the shell with a soft cloth to clean the electric scooter. Please don't put more lubricating oil on bearing when you do the maintenance for it.
- Please check the brake system and tire are vulnerable parts at least once a month. When the brake performance and tire grip are reduced, please contact the dealer to replace the corresponding parts.
- Please do not replace the accessories which not provided by manufacturer without permission, to avoid the safety hazard caused by the inconsistency for accessories with the scooter.
- It is forbidden to clean electric scooters by using water cannon or soaking in liquid. This will cause permanent damage of the electronic devices in the host.
- In order to protect the user's safety, the user can not take apart the electric scooter, otherwise, the user will give up the maintenance warranty rights of the product automatically.

## 8.2 Maintenance of tires.

The tires of this product are pneumatic. When the tire height sinks 20%-30%, it needs to be inflated. The recommended inflated tire pressure is 220-240 Kpa. The tire needs to be inflated at least once in 2-3 months. Regular inspection of the inflation can reduce the puncture situation and extend the life of the tire.

# Warranty card

## 9.1 The product has passed the inspection of the quality control department and allowed to be sold.

Please keep the warranty card and purchase invoice properly, and present the warranty card and purchase invoice when repairing.

Effective date :

Quality inspection pass seal:

## 9.2. Warranty Card

Username		Gender	
Mailing address		Age	
Phone		Zip	
Purchase address			
Price			
Description & Specification			
Dealer signature			
Sales order number			
Body number			
User signature			



Please keep the warranty card and purchase invoice as after-sales proof. This card must be provided during the warranty. If this card is not provided or the card is altered privately, the company has the right to do non-warranty treatment!