

MULTI-PURPOSE SOLAR LIGHT

OutWay

SOLAR PILLAR LIGHT
“LUMINACREST”



DESIGN IN AUSTRALIA



LuminaCrest -Solar Pillar Light



Body made of thickened die-cast aluminum, offering high strength, impact resistance, light-weight texture, and excellent corrosion resistance.

40 high-brightness LED light sources.

Transparent lamp cover with enhanced design for uniform light distribution, significantly improving illumination effectiveness.



High-efficiency monocrystalline silicon solar panel with 2W power output.

Built-in ceramic lithium iron phosphate battery (LiFePO4), 8000mAh capacity, long lifespan, and high safety.

Adjustable Color Temperature: 3000K, 4500K, 6500K

Security: Grade 304 stainless steel expansion bolts | 12kN tensile strength



Lighting Features ▶



- Reinforced Die-Cast Aluminum**
- Seamless molding, ultra-high rigidity
 - Slim profile with premium texture
 - Superior corrosion resistance



- Rubik's Cube-Inspired Design**
- Aesthetic inspired by Rubik's Cube



- IP65 waterproof rating**
- Reliable operation in rain or shine



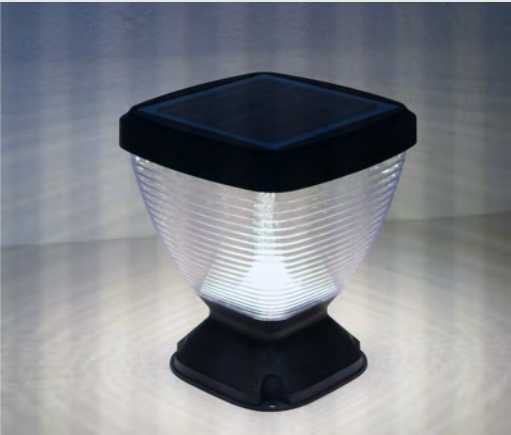
Color Temperature Options ▶



3000K / Warm White



4500K / Pure White



6500K / Warm White



- Application Scenarios:
- Beam Angle: 180° wide illumination.
- Ideal for: Villa, Courtyard garden, Courtyard, Balcony, Top of decorative wall pillars, Staircase, Background wall decoration
- Installation spacing: 2-4 meters recommended.

Product Specifications

Model	
LuminaCrest Solar Pillar lights	PT0112
Category	
Monocrystalline Silicon Solar Panel (W)	4.5W / 5V
LiFePO4 Battery (mAh)	3.2V / 8000mAh
Light Source	2835
LED Quantity	40pcs
Housing Material	Die-Cast Aluminum + PC Lampshade
Color	Black
Net Weight (kg)	0.82kg
Product Size (mm)	235mm x 235mm x H275mm
Installation Distance (m)	2-4m

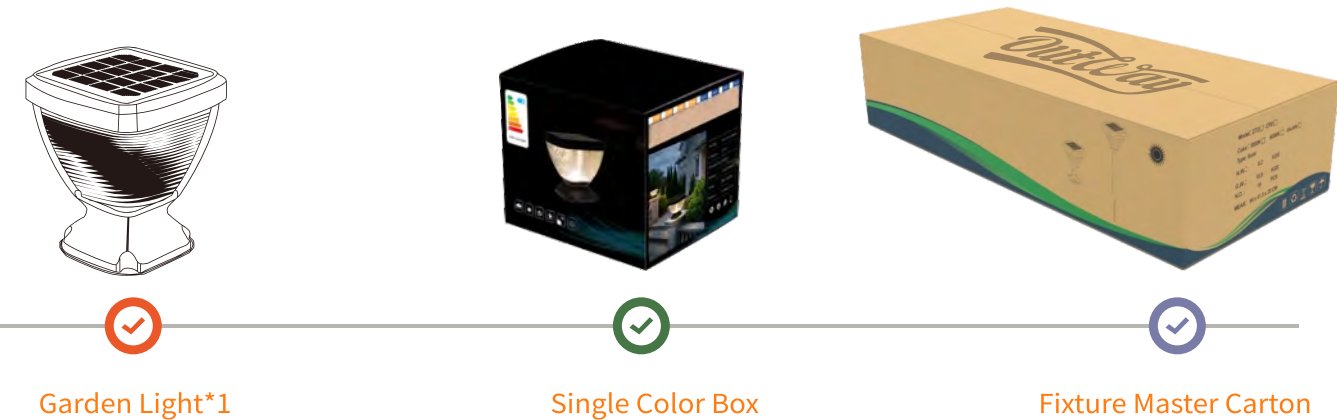
Performance	
Rated Power (W)	2W
Input Voltage (V)	DC 3.2V
Color Temperature (K)	3000K / 4500K / 6000K
Luminous Flux (lm)	104.68lm (3000K)、112.02lm (6500K)
Color Rendering Index	CRI > 80
Operating Time (Light Control Mode)	3~5 rainy days
Waterproof Grade	IP 65
Luminous Angle	180°

Operating environment +	
Operating environment	-10℃~ 50℃
Operating humidity	10%-90%

Lights Dimensions Diagram



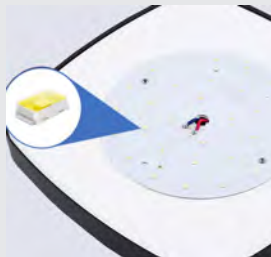
Packaging Information



Type	Packaging Type	Quantity per Unit	Carton Quantity	Carton Dimensions (mm)	Net Weight (kg)	Gross Weight (kg)
Solar	Inner Box	1	1	260 x 260 x 310		1.15
	Outer Box	4	1	550 x 550 x 340	7.2	9.13

Net weight and gross weight are for reference only

Luminaire Details



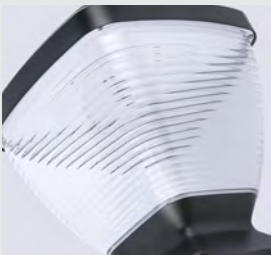
High-lumen 2835 chip
High-power LED chip, bright light, lifespan up to 80,000-100,000 hours.



Monocrystalline solar panel
High-efficiency photovoltaic conversion, rapid energy storage. Charges normally in rainy/overcast conditions.



Waterproof button switch
Light activates automatically at dusk.
(Note: Solar panel requires darkness to trigger illumination)



PC transparent lampshade
Wide coverage, soft and even light diffusion. PC material, high hardness, UV-resistant.



LiFePO4 battery
High safety, 1000+ charge cycles, fast charging.

LuminaCrest
/Solar Pillar Light

Application:
Landscape lighting for villas, parks, residential areas, industrial zones, modern architecture.
180° illumination, optimal installation spacing: 2-4 meters.





