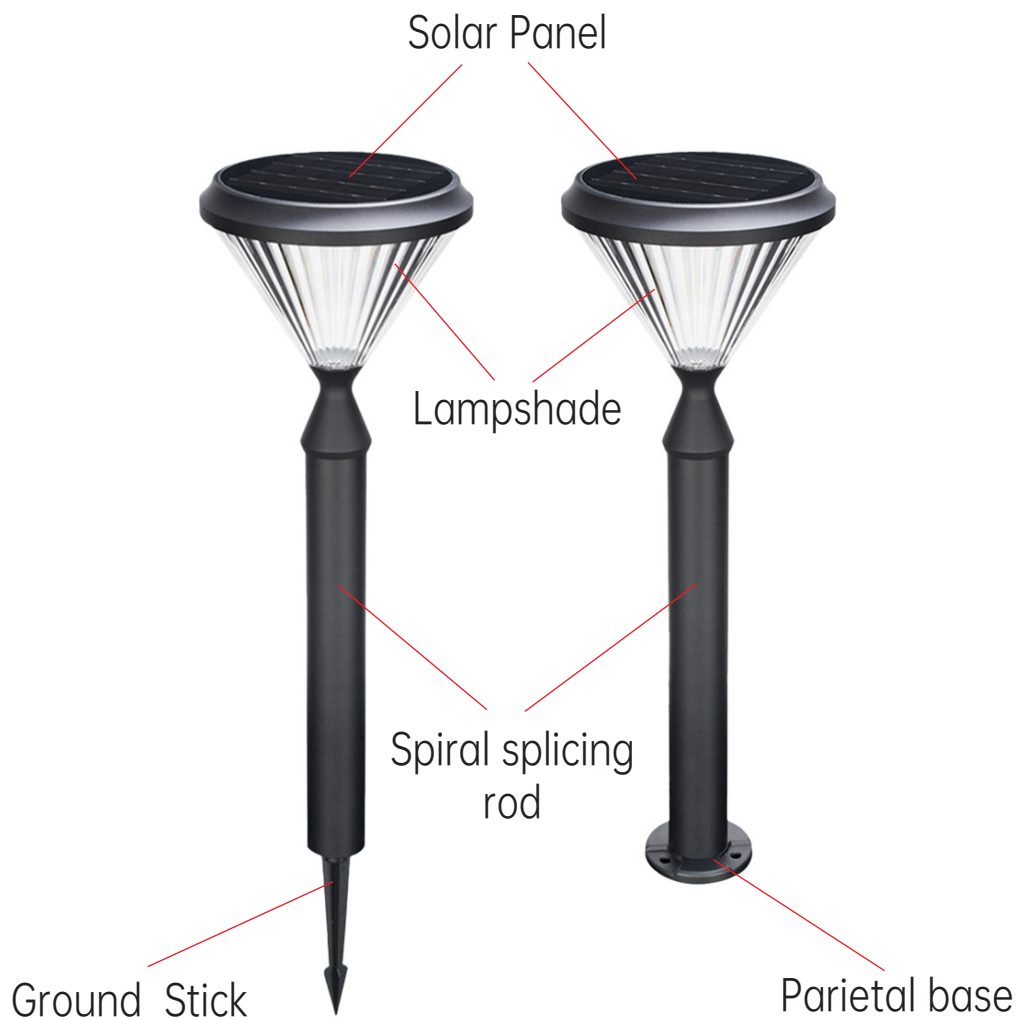


User Manual



**Verata 5-in-1 Solar
Lawn & Pillar Light PT0302**

Product Introduction :



What's Included :



Light bulb
socket



Spiral splicing
rod



Ground stick &
Parietal base



Screws



User Manual

Product Installation :

① Ground Installation



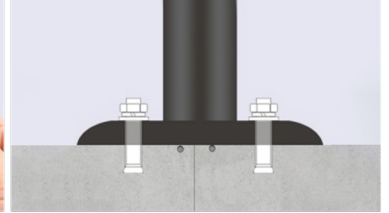
① Screw the lamp holder and the lamp pole screw together



② Then screw the connector into the light pole



③ Screw the lamp holder and the lamp pole screw together



④ After lamp turn on, plug in waterproofcap in the switch hole. The light can be installed and fixed

② Spike-mounted



① Screw the lamp holder and the lamp pole screw together



② Then screw the connector into the light pole



③ Tighten the splicing rod and the grounding plug to complete the splicing



④ Insert the light directly into the required installation to complete the installation

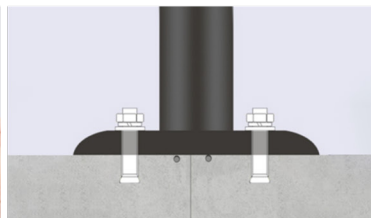
③ Post-mounted



① Screw the lamp holder and the lamp pole screw together



② Screw the lamp holder and the lamp pole screw together



③ After lamp turn on, plug in waterproofcap in the switch hole. The light can be installed and fixed



④ This installation method is applicable to pillar lights

Switch Button

Key switch control

1. Turn ON/OFF & Change lighting mode: Short press.
2. Automatically turns off lights during the day and automatically charges at night.



Specification :

Luminaire Category:	Verta 5-in-1 Solar Lawn & Pillar Light PT0302
Input Voltage:	3.2V DC
Operating Time:	3-5 rainy days
Monocrystalline Silicon SolarPanel (W):	4.5W /5V
Rated CCT:	3000K/4500K/6000K
Ambient Temperature:	-25°C<TA<50°C
Light Source:	2835
IP Grade:	IP65
Luminous Angle:	180°
Material:	Die-Cast Aluminum + PC Lampshade

Charging & Usage :

1 First Use

1. Place lamp under sunshine for 4-6h after you get goods and turn on, because it onlyreserve part energy in battery.
2. The less time to charge under sunshine, the less time to work at night, Working timedepends on surrounding,geography latitude,seasons etc.
3. There is the difference of working time and brightness extent for different light,please note.
4. Please clean the panel and in case of poor charging effect if it happen to have obstacle in panel in using.

After-Sales Service :

Warranty Period: 2 years

Void if: Physical damage, unauthorized disassembly,
or natural disasters



This marking indicates that this product should not be disposed with other household wastes throughout the EU. To prevent possible harm to the environment or human health from uncontrolled waste disposal, recycle it responsibly to promote the sustainable reuse of material resources. To return your used device, please use the return and collection systems or contact the retailer where the product was purchased. They can take this product for environmental safe recycling.

Please don't open our products by yourself, it may causes water leakage.
The power of final interpretation belong to the manufacturer.

Special Note :

1. Do not install the lamp in places facing away from the sun, under the shadow, or between two buildings whose height is above the lamp. Otherwise, it will result in insufficient absorption from sunlight and insufficient working brightness and time.
2. Do not use the lamp in the environment temperature above 45°C or below 0°C, otherwise, it will cause the battery rapid attenuation and effect the battery lifetime, even damage.
3. Do not use non-standard accessories to install the lamp, otherwise, any caused accident will be borne by the installer.
4. Please charge the lamp not less than every 3 months to ensure the lithium battery activity.
5. If the product has been stored in the warehouse for more than one year, please do fully charge and discharge inspection and make sure the battery is in good condition, Otherwise, it is forbidden to use.

Warning :

1. Keep the device away from fire and oil to avoid any fire or explosion.
2. No one except professional technicians should attempt to disassemble the light to avoid damaging the light
3. It is strictly forbidden to disassemble the battery for personal use.
4. If the lamp doesn't get charged for 3 days, the battery maybe out of power, please charge it under bright sunlight.
5. To ensure the lamp works in an ideal state for a long lifetime, please clean the solar panel regularly according to the local dust condition, it's suggested one time at least every 6 months.
6. Long timet(over one year) static storage of the produc will cause the inside battery damage or even leakage. When the battery leak, it will cause the battery leak, it will cause the battery ignite if suddenly charged by sun.