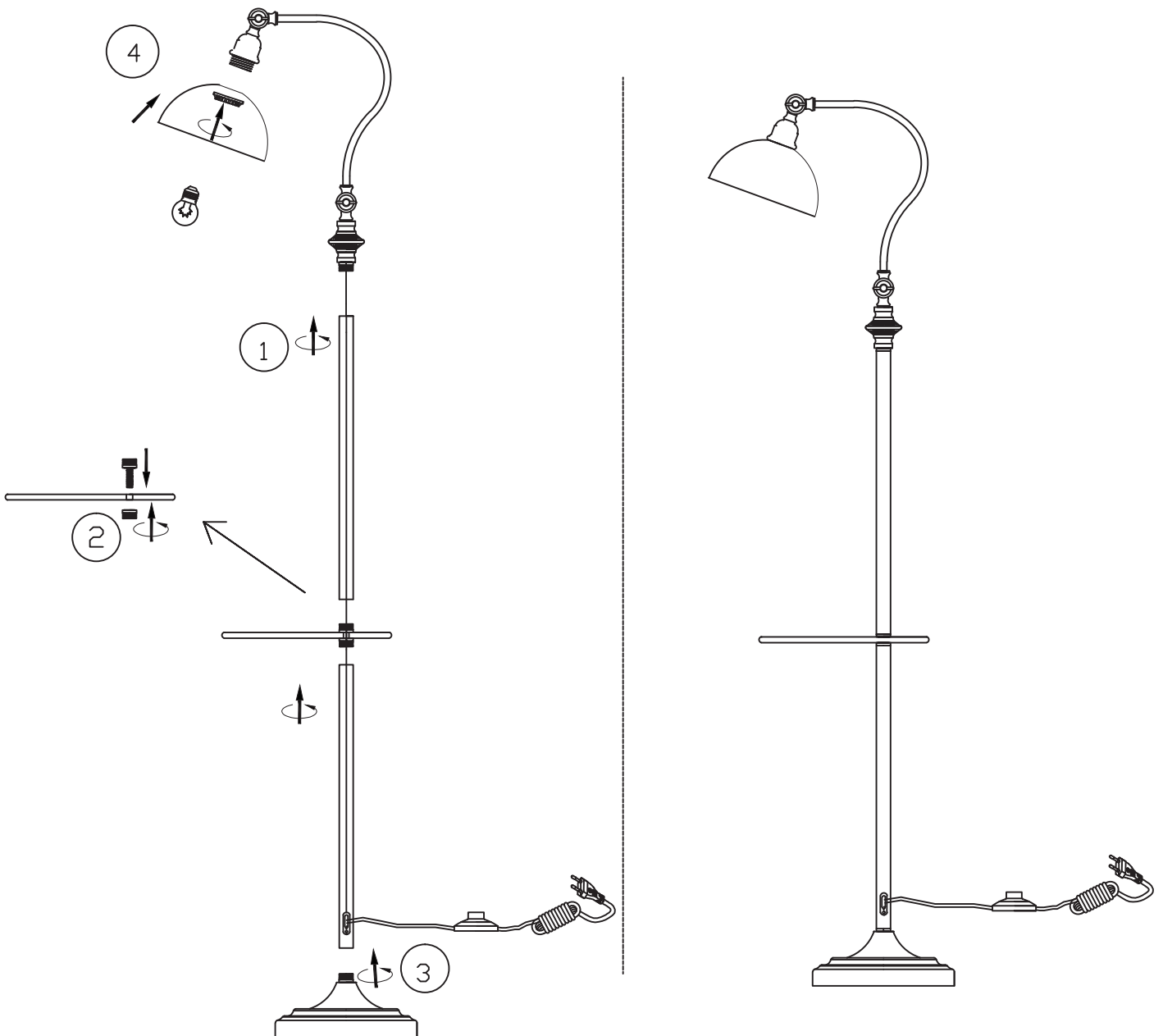


Installation instruction

Please read this manual before installation and keep it for reference.



As shown in the figure, install all the components of the lamp and install the matching light source before use
Note:

First, do not use this lamp in high temperature or humid environment, so as to avoid electric shock or short circuit

Second, please find out the power plug before cleaning the lamp. Do not use the liquid with magic corrosion to clean up, so as not to damage the surface of the lamp body

The product graphics in the manual are for reference only