

Type2 **11KW** Portable Car Charger

User's Manual

*Please read the instructions carefully before using.



Contents

Product Safety Information	1
Product Description	3
Technical Specification	4
Use Precautions	5
How to Start Charging	7
How to Stop Charging	8
Current Mode Switching	9
Timing Charging Setting	10
Introduction Of Screen Display	11
Wi-Fi function usage	12
Fixing method.....	16
Quality Assurance	17
Cause of failure	18

Product Safety Information

Thank you for purchasing and using this portable electric vehicle charger. In order to help you properly use this product, please read this user's manual carefully before charging.

CAUTION

- Do not use the device to charge on rainy days;
- Do not submerge the control box in water;
- Do not step on, pull, fold or knot the cable;
- Do not drop the control box or place heavy objects on it;
- Do not place the charging cable near high-temperature objects when charging;
- Do not place the device in the car or in a sealed space when charging;
- Do not operate the device in temperatures beyond its operating range of -25°C to $+50^{\circ}\text{C}$;
- 16A Power- supply side input cable should be at least $3 \times 2.5\text{mm}^2$ (recommended $3 \times 4\text{mm}^2$) It is suggested that the power distribution is operated by professionals.

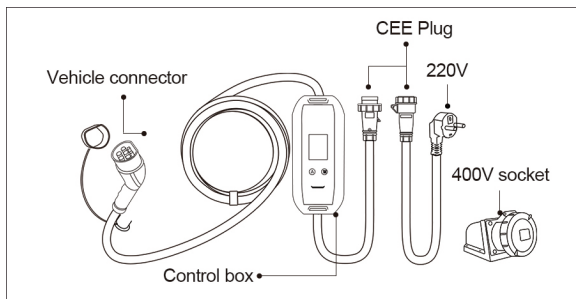
Product Safety Information



WARNING

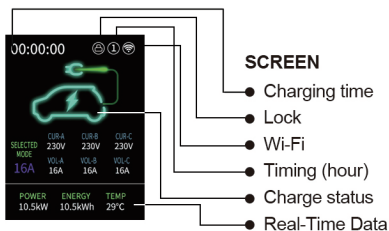
- Only for EV charging.
- Only for use in the situation that the power-supply side contains an RCD breaker protector.
- Do not use the device when the cable is broken .
- Do not use the device with an additional cable.
- Do not put your fingers into the charge connector.
- The device contains no maintainable parts. Do not attempt to repair or maintain it by yourself.
- Please contact the dealer for repair or replacement when the device can not work.

Product Description



*Two charge power under different voltage situations:

- 1 Power Max. 3.5KW when the voltage is at 230V 16A
- 2 Power Max. 11KW when the voltage is at 400V 16A



INDICTOR

- Blue (Always on) : Unconnected
- Green (Always on) : Connected
- Green (Breathing) : Charging
- Red (Always on) : Fault

Technical Specification

	Type Of Plug	400V Socket	220V 16A Plug
Technical Features	Input Power	400V AC 50/60Hz	220V AC 50/60Hz
	Output Power	400V AC 50/60Hz	220V AC 50/60Hz
	Output Current	8A/10A/13A/16A	
	Standby Power	<1.5W	
	Standard	IEC 61851-1	
	Max power	11Kw	3.5Kw
	Charge Interface	Type 2	
	Physical Features	User Interface	RGB LED, LCD, Touch Button
Dimensions		230*100*57mm(L*W*H)	
Weight		~5kg	
Protection		IP65	
Operating Temperature		-25°C to +50°C	
Humidity		<95%RH	
Operating Altitude		<2000m	
	Cooling Method	Natural Cooling	
Safety Design	Overvoltage Protection, Overcurrent Protection, Leakage Protection, Overtemperature Protection, CP Protection, Lightning Protection, Ground Protection.		

Use Precautions

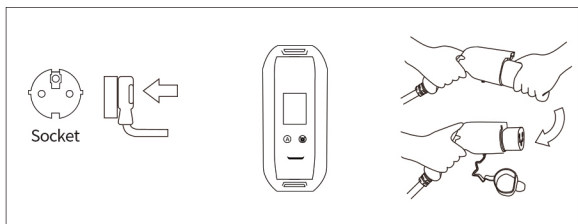
1. If the vehicle connector is damaged due to the failure to use the cable with the specified wire diameter, the Three Guarantees service will not be enjoyed.
2. Do not put in-flammables, explosives or combustible materials, chemicals, combustible steam, and other dangerous goods near the vehicle connector.
3. Please keep the vehicle connector clean and dry. If it is dirty, please immediately disconnect the power plug from the power socket to make sure no power, then please wipe it with a clean dry cloth. Do not touch the metal pin in the connector by hand.
4. Do not use the charging cable when it is defective, cracked, worn, cracked or exposed. If you find the above situation, please contact customer service in time.
5. Do not attempt to disassemble, repair or refit the charging device. If you need to repair or refit, please contact customer service. Incorrect operation may lead to equipment damage, water leakage, electric leakage, etc.
6. In case of any abnormality during use, all input power should be cut off immediately.

Use Precautions

7. In case of rain and thunder, please charge it carefully.
8. Children are not allowed to approach or use the vehicle connector during charging to avoid injury.
9. It' s strictly forbidden for any person to pull out the head of the vehicle connector without authorization during the charging process, so as to avoid a safety threat to the vehicle or personnel during the charging process.
10. Vehicles are not allowed to drive during charging. Charging can only be carried out when the vehicle is stationary. For hybrid vehicles, please stall the engine before charging.



How to Start Charging



Step 1

Step 2

Step 3

1. Insert the plug into the power-supply socket firmly(Step 1).

⚡ Ensure the cable is in compliance with national standards.

2. Press the button [A] to switch the charging current mode.

Press the button [CLOCK] to set the charging time (Step 2).

3. Pull the cap of the charging gun lightly and completely, then insert the vehicle connector's head into your vehicle's outlet (Step 3).

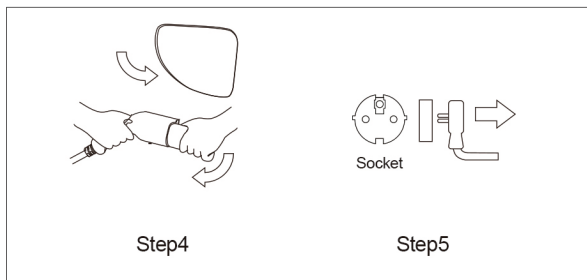
Ensure the vehicle connector's head is fully inserted until it's locked.

4. The device starts charging automatically.

! If "Auto-Start" is on (no small lock icon in the top right corner of the screen), charging starts automatically when the gun is inserted;

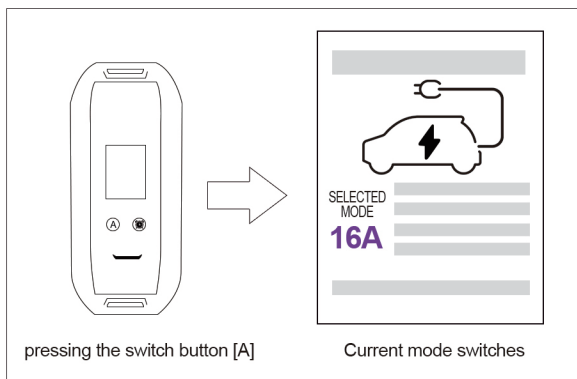
! If "Auto-Start" is switched off (there is a small lock icon in the top right corner of the screen), the phone needs to be connected to Wi-Fi for authorization to start charging

How To Stop Charging



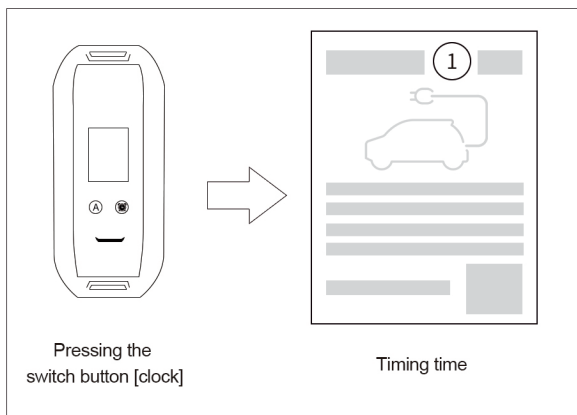
1. Close the protective cap of EV and put on the protective cap of charging connector(Step 4).
2. Disconnect the plug from the power-supply socket (Step 5).
3. Put the charging cable into the bag.

Current Mode Switching



1. Please insert the power-supply plug into the power-supply socket firmly and disconnect the vehicle, then current mode can be switched by pressing the switch button [A].
2. The device supports 4 current modes of 8A/10A/13A/16A.
(Current switching numerical change in real-time.)

Timing Charging Setting

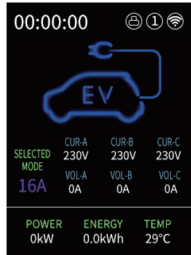


1. Please insert the power-supply plug into the power-supply socket firmly and disconnect the vehicle, then the timing charging can be set by pressing the switch button [clock];
2. The timing time increases by 1 hour when you press the button once.

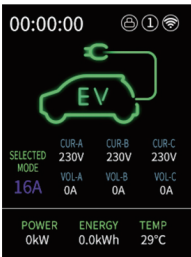
Introduction Of Screen Display



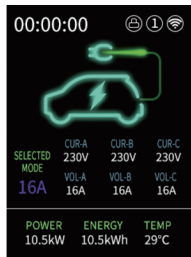
Loading



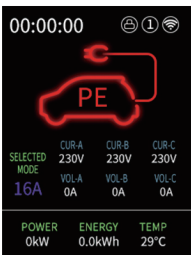
Unconnected



Connected



Charging



Fault

Wi-Fi function usage

1. Connect to Wi-Fi, turn on the Wi-Fi of the mobile phone, search, and connect to the Wi-Fi name beginning with ---, the initial password is: 12345678 (note: the mobile phone cannot access the Internet after connecting to Wi-Fi)

! If your phone prompts you that this network is not available, whether to use it or whether to switch, please choose to continue using it or not to allow switching.

2. Open the mobile browser (it is recommended to use the default browser of the mobile phone), enter the IP address in the browser URL bar: 192.168.4.1, or use the browser to scan the code to open the web page:

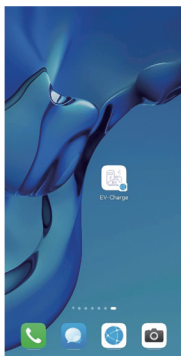
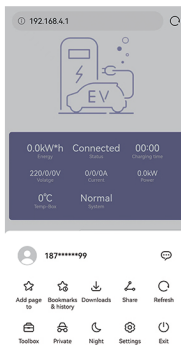
Tip: You can save this website as a bookmark, and next time you use it, open the browser after connecting to the charger Wi-Fi and click on the bookmark to open the web page;

Some browsers also support adding bookmarks to the desktop. After connecting to the Charger Wi-Fi, we can simply click on the icon on the desktop to open the web page, just as convenient as using an APP.

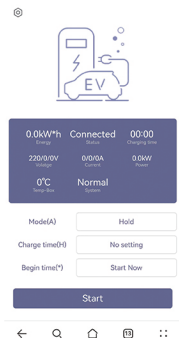


scan the code to
open the web page

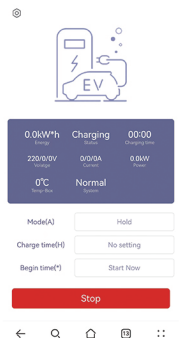
Wi-Fi function usage



3. Using the handset to initiate charging



Home page



Charging



Stop charging

Wi-Fi function usage

Once the charger has been inserted into the vehicle's charging port, charging can be started by clicking on "Start" on the mobile phone's web page;


Before charging, if required the following settings can be made :


- **Mode:**Setting the level of charging current, the higher the current, the higher the output power provided by the charger;
- **Charge time:**It will automatically stop charging when the charge duration reaches a set value;
- **Begin time:**It is the time at which charging will begin. By setting this parameter, an appointment is made to start charging at a certain point in time; when Countdown appears, the appointment is set successfully;

Set the parameters and click Start to charge.

To start or stop charging the charger using the phone, you need to turn off "Auto-Start" in the settings;

To use the appointment charging function, you need to turn off "Auto-Start" and "Conn-Start" in the settings;

 Some car models may not support the reservation function, if the reservation does not work, please set the Begin time to Start Now.

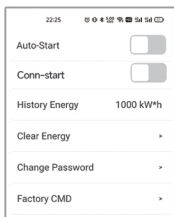
 The appointment setting is valid for a single time and the device will record the set time. If the next time you start charging at the same time, just need to open the web page and click on Start;

Wi-Fi function usage

4. Settings

The settings screen can be accessed by clicking on the settings icon in the top left corner of the home page, with the following main options:

- (1) Auto-Start: When this function is switched on, charging starts automatically when the gun is inserted;



When this feature is switched off, a mobile phone connection to the charger's Wi-Fi is required for authorization before charging can be activated, which prevents others from stealing the charger;

- (2) Conn-Start: When switched on, the plug gun can automatically start charging when the phone is connected to the charger's Wi-Fi;

⚠ Note: To use the sensor-less start-charge function, you need to turn off "Auto-Start" .

- (3) History Energy

Historical charge total; if cleared, accumulated since last cleared;

- (4) Clear Energy

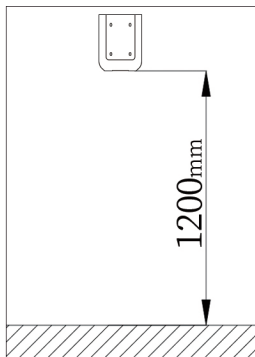
Clear accumulated power

- (5) Change Password

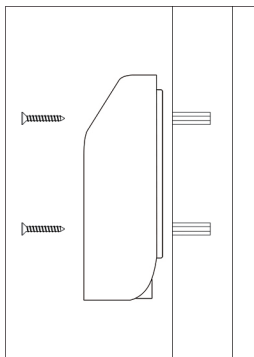
Change the password of the Wi-Fi hotspot; to prevent others from connecting to the charger, it is recommended that the password be changed after the first connection;

Fixing method

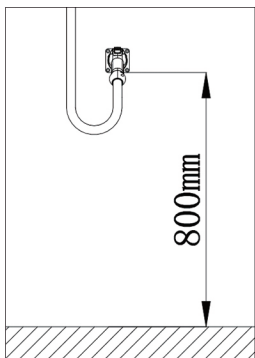
1. Locate and punch holes



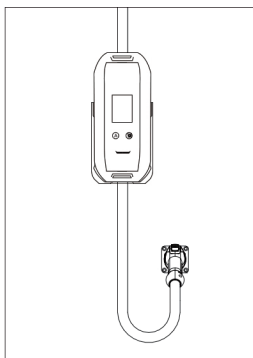
2. Install the fixed back



3. Install the charging gun base



4. Design sketch



Quality Assurance

This portable EV CHARGING is warranted to be free of maintenance for products that can not charge properly due to self-quality for a period of one year from the date of shipment.

Our company offers free maintenance service to those products that can not charge properly due to self-quality from the date of shipment within one year.

This warranty does not cover any damage due to the following cases:

1. Improper handling, installation, use and maintenance by users
2. The break down and the failure caused by the force majeure, such as direct damage and inability to function properly caused by natural disasters.
3. Products drop from a high height or are soaked in water.

This warranty does not include the cost of freight to return the device to our company.

This warranty is only valid to the original purchaser of the device and is not transferable.

Cause of failure

Fault Name	Cause of failure
OV	The input voltage is too high, and it is detected that the AC input voltage exceeds $270\pm 5VAC$
UV	The input voltage is too low, and the AC input voltage is detected to be lower than $90\pm 5VAC$
OC	Over-current, it detects that the charging current is too large and lasts for more than 5 seconds
OT	Over-temperature, the internal temperature of the charger exceeds $85^{\circ}C$
LEAK	Leakage, detected leakage current exceeding 30mA AC
PE	Underground wire or poor grounding
CP	The communication between the charging gun and the CP on the car is abnormal



Make The Car Charging Safer

